

Science

Animas Including Humans –

To identify and name the main parts of the human circulatory system by recalling prior knowledge of systems in the human body and labelling a diagram.

To describe the ways in which nutrients and water are transported within animals including humans in the context of the human body.

To recognise the impact of diet and exercise on the way their bodies function by describing effects of a healthy lifestyle.

To plan different types of scientific enquiries to answer questions including recognising and controlling variables where necessary taking measurement with increasing accuracy and precision.

To create an enquiry that compares and categorises different forms of exercise.

English

Students will be studying the novel "A Christmas Carol" by Charles Dickens. This will include discussing and analysing the character of Scrooge alongside the Ghosts of Christmas Past/Present/Future. They will have opportunities for writing for different purposes such as: letter writing, chronological report, descriptive writing, monologue and re-tell.

Grammar – Verbs and Tenses

Ensure subject-verb agreement and correct and consistent use of tense in writing.

Use the perfect form of verbs to mark relationships of time and clause.

Indicate degrees of possibility using modal verbs and adverbs.

Maths

Position and Direction: To read and plot co-ordinates in all four quadrants. To draw shapes from co-ordinates given. To become fluent in deciding which part of the axis is positive or negative. To use knowledge of co-ordinates and positional language to translate shapes in all four quadrants. To describe translations using direction and use instructions to draw translated shapes. To reflect shapes in both the X and the Y axis.

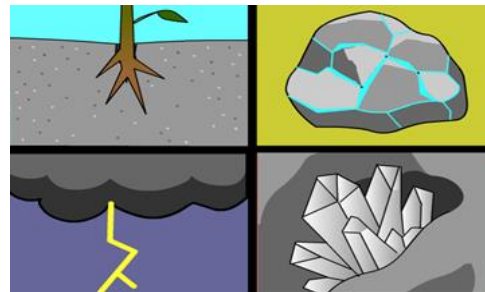
Fractions: - Compare and order fractions, including fractions > 1
Add and subtract fractions with different denominators and mixed numbers, using the concept of equivalent fractions.
Multiply simple pairs of proper fractions, writing the answer in its simplest form [for example, $\frac{1}{4} \times \frac{1}{2} = \frac{1}{8}$]
Divide proper fractions by whole numbers [for example, $\frac{1}{3} \div 2 = \frac{1}{6}$]
Associate a fraction with division and calculate decimal fraction equivalents [for example, 0.375] for a simple fraction [for example, $\frac{3}{8}$]
Recall and use equivalences between simple fractions, decimals and percentages, including in different contexts.

Times Tables: Continue to practise and learn by heart all their times tables.

How are our coastlines changing?

Topic – Geography

To explain how erosion and weathering can change the landscape.
To be able to identify coastal features of the UK and how they are formed.
To explain how water and weather can change the coastline over time.
To name and locate towns and cities of the UK, geographical regions and their identifying human and physical characteristics, key topographical features (including hills, mountains, coasts & rivers) and land use patterns.
To discuss how the make-up of the UK has changed over time.
To understand how the international borders of Europe have changed over time.



Spanish

- Christmas Songs
- Celebrations

P.E

- All Star Dance
- Commando Joe Unit – Leif Erikson

Design Technology

Designing/making craft for the Christmas fayre.

R.E – PSHE

R.E – Christianity

The Christmas Story
How significant is it that Mary was Jesus' mother?

PSHE – Celebrating Difference

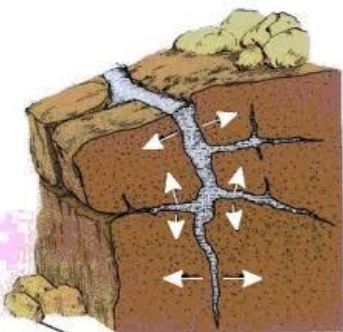
To understand and explain difference.
To explain some ways that certain people can have power over others.
To know some of the reasons why people use bullying behaviours.
To give examples of people with disabilities who lead amazing lives.

Music

Charanga Unit 2 – Classroom Jazz
Christmas carols and songs

ICT

E-Safety



Home and School

- Homework will be given out every Monday to be handed in the following Monday. Times tables and spellings will also be set online each Monday for the weekly test. These will be on the Spelling Shed and Times Table Rockstar online platforms.
- Please continue to read at home and ensure your reading record is being signed so you can achieve your rainbow badges.