

Key Facts

Griffier was a painter in the 'Dutch Golden Age', a period when the art, trade and science of the Netherlands, as well as their armed forces, were considered to be the best in Europe.

As well as pictures of England, he painted landscapes in the Rhineland and his native Netherlands.

He bought a houseboat so his family could move around with him as he made money from painting different landscapes.

Jan Griffier (1652-1718)



Plaisir d'Hiver

Griffier's Landscapes



Winter Landscape



Dutch Snow Scene with Skaters

Key Work



Great Fire of London (1675)

This shows Griffier's impression of what the fire must have looked like, nine years earlier.

Key Work



The Great Fire of London, 1666

This image focuses on the fire's imagined effect on individual buildings.

Key Work



The Great Fire of The Great Fire of London

This painting shows the fire from a different perspective.

Key Vocabulary

- Oil pastel** A mixture of pigment, oil and wax in a stick.
- Chalk pastel** A stick of pigment that leave a chalky powder.
- Blend** To mix/smudge colours a little at a time to create a gradual change.
- Complementary colours** Colours from opposite sides of the colour wheel.

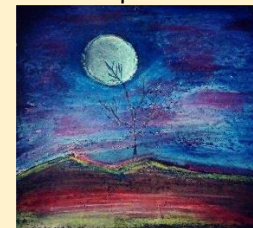
Year 2 Knowledge Organiser

Pigment: Pastel

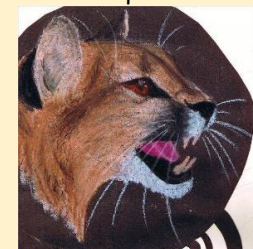
- Use a variety of tools, including pencils, rubbers, crayons, pastels, felt tips, charcoal, ballpoints, chalk and other dry media.
- Draw for a sustained period of time from real objects.
- Begin to explore the use of line, shape and colour; experiment.

Examples of Existing Art

Oil pastels

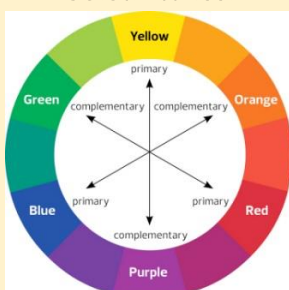


Oil pastel



Blended chalk pastel

Colour Wheel



Equipment and Technique



Oil

Blending chalk pastels

