



## Newsletter Spring 1 2025

Welcome back and happy new year to you all, wishing you all a happy and healthy 2025. It is lovely to see the children back in school today excited to share their experiences of what they have been doing over the festive period and eager to be back with their peers, learning in their classrooms.

We have had a very positive start to the new year having received the news that Ringway has been identified as one of the top primary schools in Northumberland based on our performance data. We placed 7th out of the 161 Primary schools in Northumberland which is an amazing achievement and a great testament to the hard work of all our staff team and the support from our school parents.

You can read the article here: [Northumberland's top state primary schools](#)

We are also hopeful that our new school build might finally get under way from around Easter time. There are currently a couple of issues to be resolved with planners but we have been assured these should be resolved soon.

As always at this time of year, it is relatively quiet in school - please familiarise yourself with some reminders below and also some important dates for the term in the attached calendar.

Thank you

## Lateness



School starts for all children at 8.45am, classroom doors close at 8.50am with registers closing at 8.50am.

Last half term, there was an increased number of children arriving very late for school - if a child is late more than 30 minutes this is marked as an absence and effects the child's attendance record. If the child becomes a persistent absentee, even through lateness, this will trigger EWO (Education Welfare Officer) involvement.

Reminder, If your child is absent, as per school policy, you must inform the school office either by telephone, voicemail or via email by 9.30am on each day of absence.

## PE Uniform



Class PE days may have changed this half-term, please ensure you keep up to date via Class Dojo. Children should come to school on their PE day in PE uniform, this will be communicated to you via your child's Class Dojo page. As per our [School Uniform Policy](#), this must be a **plain** white t-shirt, black shorts, leggings or jogging bottoms and plain black trainers. Children can also wear a black hoody (optional) or their school jumper/cardigan. Earrings must be taken out for PE.

Thank you for your cooperation.

## Parking - Local Residents and Yellow Lines



Please continue to be mindful of our local residents when parking outside and around school. **Remember the yellow lines should not be parked on at any times.**

We need to rely on parents/carers to help keep all our children safe outside of our school.

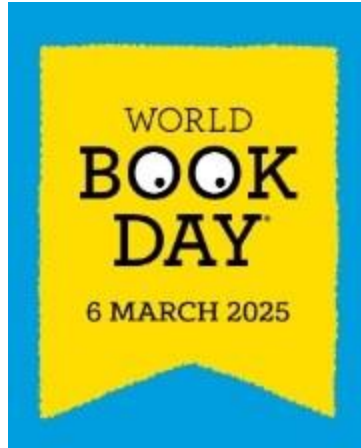
We have contacted Northumberland County Council about the paving directly outside of the school gate which is prone to flooding. After reporting this a few times, we have now been informed that this will be repaired.



Times Table Rock Stars is an amazing online tool to help children learn and practise their times tables. In Key Stage 2, by the end of Year 4, all children are expected to confidently know all of their tables and sit a Multiplication Tables Check.

Children from Year 2 upwards have an individual account and teachers can track how often children are logging on to their accounts. Children in Key stage 2 should be logging in and spending some time on this each week as part of their weekly homework tasks. Knowing their multiplications supports all other areas of the maths curriculum resulting in increased confidence in learning.

Please encourage your child to access and practise these regularly (even as little as 5 minutes a day), it really does make a difference.



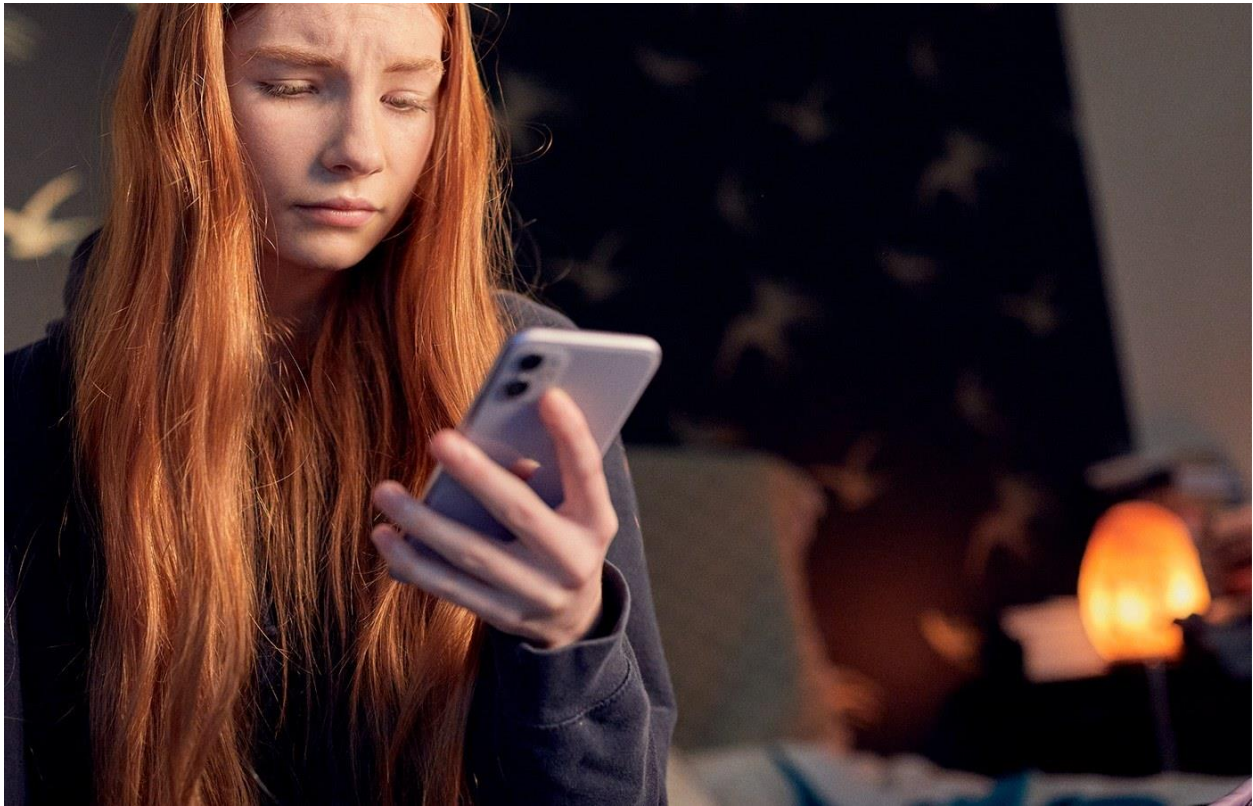
We will be taking part in World Book Day on Thursday 6th March. More details will follow later this half term.

### New baby



Congratulations to Mrs Atkinson who gave birth to a beautiful baby girl named Elsie just before Christmas.

## Online Safety Guides for Parents



We all have a part to play in keeping children safe online, please follow [this](#) link for online safety guides from the NSPCC.



## Free School Meals and Pupil Premium

Pupil Premium is more than just free school meals. The Pupil Premium entitles your child to free school meals (worth over £400 a year) and in addition provides school with crucial funding (up

to an additional £1,320 per eligible student). It is essential that, if your child is eligible for the Pupil Premium, you apply for free school meals (even if they are an infant who already receives free school meals or if you have no intention of taking up free school meals). This ensures that both your child and others in school are able to benefit from the additional funding the Pupil Premium generates.

Families who qualify for free school meals are also supported with vouchers for food/clothing throughout each school holiday period.

Application form: [Northumberland County Council](#)



Visit the Northumberland County Council website to find out what support is available.

[Northumberland County Council - Support for families](#)

## Forest School Dates for Spring 1

Week	Forest school
Friday 17 <sup>th</sup> January	Year 5
Friday 24 <sup>h</sup> January	Year 4
Friday 31 <sup>st</sup> January	Year 6
Friday 7 <sup>th</sup> February	Year 3
Friday 14 <sup>th</sup> February	Year 1/ Year 2
Friday 21 <sup>st</sup> February	Nursery/Reception

## School Calendar for Spring 1 Term 2025

Monday 6 <sup>th</sup> January	Teacher Training Day
Friday 10 <sup>th</sup> January	House Winner's Non-Uniform
Wednesday 15 <sup>th</sup> January	Martial Arts workshop Year 5 and Year 6
Friday 17 <sup>th</sup> January	Year 5 Forest School
Friday 24 <sup>th</sup> January	Year 4 Forest School
Monday 27 <sup>th</sup> January	SATs information meeting – Year 6 parents 3.15pm
Wednesday 29 <sup>th</sup> January	Reception/ Year 6 Height and Weight Checks.
Friday 31 <sup>st</sup> January	Year 6 Forest School
Wb Monday 3 <sup>rd</sup> February	Children's Mental Health Week
Friday 7 <sup>th</sup> February	Year 3 Forest school
WB Monday 10 <sup>th</sup> February	Assessment week in school
Tuesday 11 <sup>th</sup> February	Safer Internet Day
Tuesday 11 <sup>th</sup> February	Online Safety workshops (KS1 and KS2)
Thursday 13 <sup>th</sup> February	Valentine Disco/Parties
Friday 14 <sup>th</sup> February	Year 1/2 Forest school
Friday 21 <sup>st</sup> February	Nursery/Reception Forest School
Friday 21 <sup>st</sup> February	School breaks up for February half term break
Monday 3 <sup>rd</sup> March	Children return to school
Tuesday 4 <sup>th</sup> March	Reception Vision Screening
Thursday 6 <sup>th</sup> March	World Book Day
Friday 7 <sup>th</sup> March	Spring Reports to parents
Friday 7 <sup>th</sup> March	House Winners Non-Uniform Day
Friday 7 <sup>th</sup> March	Year 6 Forest School
WB Monday 10 <sup>th</sup> March	Book Fair in School
Monday 10 <sup>th</sup> March	Parent's Evening (All classes except Year 1)
Tuesday 11 <sup>th</sup> March	Parent's Evening (All classes)
Wednesday 12 <sup>th</sup> March	Parent's Evening (Year 1 only)
Friday 14 <sup>th</sup> March	Year 5 Forest School
Friday 21 <sup>st</sup> March	Red Nose Day
Friday 21 <sup>st</sup> March	Year 4 Forest School
Friday 28 <sup>th</sup> March	Year 3 and Year 4 Visit to Centre for Life
Friday 28 <sup>th</sup> March	Year 1 Forest School
Monday 31 <sup>st</sup> March	Easter Egg Competition/ Easter Raffle
Monday 31 <sup>st</sup> March	Ford Castle (Year 3 and Year 4) Parent Information meeting 3.15pm
Friday 4 <sup>th</sup> April	Year 2 Forest School
Monday 7 <sup>th</sup> April	Nursery/ Reception Easter coffee Morning 9.30am
Tuesday 8 <sup>th</sup> April	Year 5/Year 6 Easter coffee Morning 9.30am
Wednesday 9 <sup>th</sup> April	Year 1/ Year 2 Easter coffee Morning 9.30am
Thursday 10 <sup>th</sup> April	Year 3/ Year 4 Easter coffee Morning 9.30am
Friday 11 <sup>th</sup> April	Nursery/Reception Forest School
Friday 11 <sup>th</sup> April	Year 3 Forest School
Friday 11 <sup>th</sup> April	School finishes for Easter break at 3.15pm



# TERM DATES 2024/2025

RINGWAY PRIMARY SCHOOL HOLIDAY AND TERM DATES 2024/2025

HOLIDAY OR OCCASION OF CLOSURE	DATE ON WHICH SCHOOL WILL CLOSE	DATE ON WHICH SCHOOL WILL REASSEMBLE
TEACHER TRAINING DAY	MONDAY 2 SEPTEMBER 2024	
Summer 2024	Friday 19 July 2024	Tuesday 3 September 2024
TEACHER TRAINING DAY	Monday 4 NOVEMBER 2024	
October Mid Term 2024	Friday 25 October 2024	Tuesday 5 November 2024
TEACHER TRAINING DAY	Monday 6 JANUARY 2024	
Christmas/New Year 24/25	Friday 20 December 2024	Tuesday 7 January 2025
TEACHER TRAINING DAY	FRIDAY 28 FEBRUARY 2025 * This falls within the holiday	
Spring Mid Term 2025	Friday 21 February 2025	Monday 3 March 2025
Easter 2025	Friday 11 April 2025	Monday 28 April 2025
MAY DAY	MONDAY 5 MAY 2025	
TEACHER TRAINING DAY	MONDAY 2 <sup>nd</sup> JUNE 2025	
Summer Mid Term 2025	Friday 23 May 2025	Tuesday 3 June 2025
Summer 2025	Friday 18 July 2025	Tuesday 2 September 2025