



Key Vocabulary	
Map	A specially drawn picture of a place from above.
House	A building that people live in
Job	A position of paid employment
Physical feature	natural features on the Earth's surface such as water, lakes, mountains
Human feature	Things that have been built by people
Fieldwork	To go out and about to get a practical understanding of something

Safely Exploring Your Local Area through Fieldwork	
Be safe! Listen to instructions and follow what an adult is asking you to do.	Be aware of the roads. Keep to pavements at all times. Only cross roads when you are told to do so by an adult and stay with your partner.
Be polite. Move to one side of the pavement if other people are walking. Remember that you are setting an example to others when you are out and about.	Be observant. Follow any signposts that may be helpful on the walk.
Use your map to follow the route. See if you can spot any familiar symbols!	Look, listen and smell. Use your senses to observe the area.



Google Maps



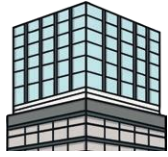
Compass

Buildings in the Local Area

Buildings in the local area could be used for lots of different things. Some of these could be...



school



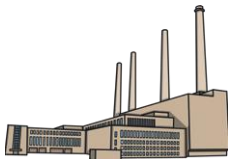
offices



railway station



leisure centre



factory



hospital

Houses

You might see lots of different types of houses in your local area. Some of these could be...



houses/housing



detached



semi-detached



terraced



cottage



bungalow



flats



caravan

Jobs in the Local Area

Employment in our local area include:

Hairdresser



Doctor



Baker



Teacher



Shopkeeper

