



## Newsletter - Autumn 2 2023

[Newsletter - Autumn 2 2023](#)

Welcome back to Autumn 2 Term. I hope the children enjoyed their Autumn break, The children all looked fantastic in their Halloween costumes just before the break and enjoyed their discos/parties with the added excitement of a power cut!

Last half term was very busy and we were very impressed at how quickly and maturely the children settled into their new classes and continue to model our school RESPECT values around school. Each

class fit so much into the first few weeks and it was lovely to see the children fully engaged, confident and thoroughly enjoying their learning experiences.

We try to keep parents informed of all the fantastic things happening in school and what our children are learning via Class Dojo, our school Facebook and individual class pages on our school website. Please ensure you check these regularly.

Thank you to those who could attend our information coffee mornings and parent's evenings last term, parent/teacher partnerships are extremely important in supporting children's learning.

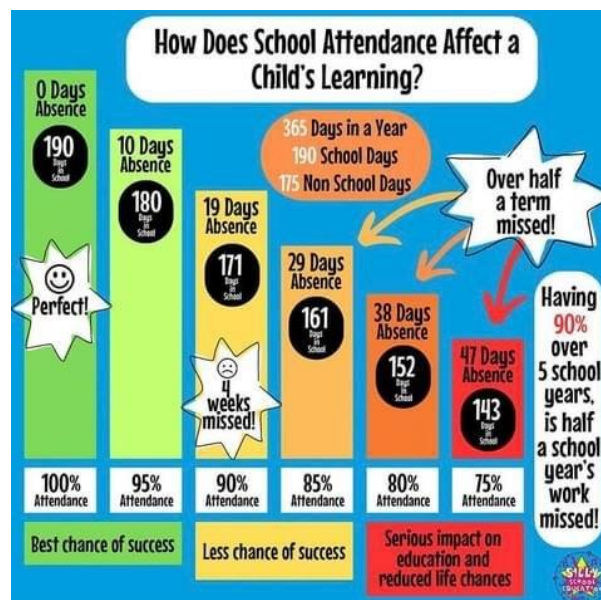
We are very excited to get started this half-term with lots of fun things planned in the lead up to Christmas - it is set to be a very busy one. Please familiarise yourself with some reminders below and also some important dates in the attached calendar.

Thank you

## Lateness

Unfortunately, we are seeing an increasing number of children persistently being late for school each morning. School starts for all children at 8.45am, classroom doors close at 8.50am with registers closing at 8.50am, by this point children are already 5 minutes late. If your child arrives after this time, this means the class register has already closed and for safeguarding reasons, children must enter school through the main reception door to ensure they are signed in and they are marked onto their register in case of any emergencies.

Lateness does affect your child's attendance score and will be picked up by our Education Welfare Officer during their half-termly visit to school.



## Vision and Values

Our school vision is built on the core values of RESPECT and the need to respect ourselves, each other and our future. Our values are embedded throughout the curriculum, our behaviours and the school environment.

## **Respect**

We believe that we should respect ourselves, each other and our future. At school we learn with each other and from each other, accepting and respecting our differences. We listen to what each other say and respect our different ideas and opinions. We show courtesy and politeness to each other and our community.

## **Equality**

As friends we understand one another and treat each other as equals irrespective of gender, religion, ethnicity, culture or disability. We should be able to talk about our beliefs, say how we feel and make mistakes without fear of judgement or prejudice. We believe we should value and respect our similarities and differences and teach our children to understand what it means to be part of a community.

## **Self-Belief**

We want pupils to feel good about themselves, be proud of their achievements and believe that they can always improve through effort and hard work. They should have the confidence to take risks, embrace challenge and the self-assurance to solve problems and achieve their goals.

## **Perseverance**

Learning and life are not always easy and require us to learn from our successes and also from our failures. We teach children how to persevere and show resilience even when things are hard. We celebrate effort and encourage our children to support and encourage each other to persevere and take pride in all that they achieve through hard work and determination.

## **Excellence**

We believe giving our best in all that we do. Every day we learn with and from each other and work hard to question, investigate and acquire knowledge. We believe in growth mindset and are committed to excellence and instilling the confidence to persevere without fear of failure.

## **Creativity**

We believe that everyone should be given the opportunity to learn in a creative environment that inspires you to imagine, explore ideas and concepts, make connections and think critically. Creativity of thought is encouraged and children and adults are able to explore their thinking and learning with confidence and intellect.

## **Team work and collaboration.**

We believe that people achieve more through collaboration. We therefore understand what it means to be part of a team and work together to inspire learning and achieve great things. We work as a team to be part of our wider community.

## Ringway Respect Rainbow Values



## PE - Gymnastics

All children will be taking part in gymnastics as their PE unit this half term. For safety reasons the children will work in bare feet.

Earrings cannot be worn for any gymnastic activities - they must be **fully removed** and cannot be taped over. Please remove these before school or ensure your child is able to take out their own earrings prior to their lesson.

This has come from the following information:

The National guidance has always been that no jewellery should be worn in PE and that includes swimming and physical activity. It is also not safe to cover ear-rings / studs / sleepers with tape. The reason is both because of the potential tearing of the ear lobe, but also the very slim chance that the post of the ear-ring could damage the neck which is where the brachial nerve is running directly to the brain. There are anecdotal cases of children wearing ear-rings / studs with plasters over being hit by a ball or coming off worse in a collision and having nasty injuries as a consequence. Therefore we cannot allow any jewellery to be worn during PE lessons.

Children should come to school on their PE day in PE uniform. As per our [School Uniform Policy](#), this must be a **plain** white t-shirt, black shorts, leggings or jogging bottoms and plain black trainers. Children can also wear a black hoody (optional) or their school jumper/cardigan.

Long hair must also be tied back. Thank you for your co-operation.

## Parking - Local Residents and Yellow Lines

We continue to receive a large amount of concerns from our local residents about the parking outside of school and along Ringway. This included blocking full and part driveways, double parking and parents being rude when challenged about this.

Despite numerous communications and reminders from school, it is disappointing that that these issues are still ongoing.

EVERY DAY there continues to be parents parking on the yellow lines outside of school that are there for the safety of our children arriving to and leaving school. **The yellow lines should not be parked on at any time before, after or during the school day.**

Our school curriculum teaches children about the importance of following rules and laws and about being mindful, respectful citizens. **We need our parents/carers to also support us in doing this.**

We will continue to work with the local highways department at Northumberland County Council and our Community Police who have assured us that they will be having a more regular presence outside of school and on-the-spot fines will be issued to anyone who stops on the yellow lines.

## Christmas Trips

We have booked our annual pantomime visits to Whitley Bay Playhouse for Year 1 - 6. Each class have also organised a Christmas visit. Our fundraising fund has been used to subsidise some of the transport costs for these visits but there is still some costs we need to rely on parents to cover.

We are aware the current cost of living crisis is causing financial implications for many families and therefore we will set up ParentPay payment plans to allow parents to make payments from as little as £1 towards the balance and ask that you aim for the full balance be paid by the end of the half-term.

Please contact school if there any issues with this and we can arrange for the payment plan to be extended.



## Forest School Sessions

Forest school sessions will continue this half-term for each class - please see calendar below for individual class dates. The sessions go ahead in all weathers, and as the weather will get colder over the term, please ensure children have appropriate warm, waterproof clothing and shoes. This half-term we suggest children have:

- A warm, waterproof coat.
- Wellies - we have a supply of these in school if your child does not have their own.
- A hat, scarf and gloves.
- Thick socks.
- A spare pair of socks.
- A spare set of clothes to change into after the session if needed.

Week	Forest school
1 Friday 10 <sup>th</sup> November	Y6
2 Friday 17 <sup>th</sup> November	Rec/ Nursery
3 Friday 24 <sup>th</sup> November	Y4
4 Friday 1 <sup>st</sup> December	Y3
5 Friday 8 <sup>th</sup> December	Y2
6 Friday 15 <sup>th</sup> December	Y1
Mrs Atkinson to confirm	Y5

## Christmas Raffle Donations

On Friday 24th November, children are invited to wear non-uniform and we ask for a donation towards our Christmas raffle. This could be sweets, chocolates, alcohol, toys, toiletries, gift sets, books etc. We also welcome voucher donations from local businesses if you have any links to any businesses.

We will be having a Christmas Fayre/ Christmas shopping Evening on Thursday 30th November from 5pm-6.30pm. There will be stalls from different sellers as well as a raffle/ tombola and refreshments. We hope you can make it.



## Christmas Jumper Swap



Following the success of our Halloween costume swap, we would like repeat this for Christmas Jumper day. If you have any jumpers/ festive clothing you can donate, please can these be brought into school by Monday 27th November.

The swap dates will be Tuesday 28th and Wednesday 29th November in the school hall from 3pm-3.30pm.

The official Christmas Jumper day is Thursday 7th December.

## Children in Need



We will be supporting Children in Need on Friday 17th November. Children are welcome to come into school wearing something bright, wearing pyjamas or something Pudsey/Blush. Donations will be able to be made via ParentPay from Monday 13th November.

## Class Dojo Points Tuck Shop



This half-term, our School Council will be re-introducing their school tuck shop. Children will have the opportunity to visit the tuck shop once every half-term to spend the Class Dojo points they have earned the previous term. The tuck shop will consist of:

- Science activities.



- Small toys.
- Sweets.
- A selection of fruit
- Juice cups

New stock will be added each term. Children will be limited to purchasing one item of sweets or chocolate and one carton of juice per visit - please inform your child's class teacher if you wish for your child not to use any of their points on any sweets.

## Online Safety Guides for Parents



We all have a part to play in keeping children safe online, please follow [this](#) link for online safety guides from the NSPCC.

## New School

Attached is the current floor plan of the new school and outdoor area. At present, due to planning delays, we do not have a date for the construction to begin - we will let you know as soon as we receive this information - hopefully soon!



## School Calendar for Autumn 2 Term 2023

Monday 6 <sup>th</sup> November	Children Return to School
Friday 10 <sup>th</sup> November	House winners Non-uniform
WB Monday 13 <sup>th</sup> November	Anti-Bullying Week
WB Monday 13 <sup>th</sup> November	Maths Week
Friday 17 <sup>th</sup> November	Children in Need
Friday 24 <sup>th</sup> November	Non-Uniform Day – Fayre Donation
Friday 24 <sup>th</sup> November	Reception trip to Lillidorei
Monday 27 <sup>th</sup> November	Drop off Christmas jumpers into office for swap
Tuesday 28 <sup>th</sup> November	Christmas Jumper Swap – School Hall 3pm-3.30pm
Wednesday 29 <sup>th</sup> November	Christmas Jumper Swap – School Hall 3pm-3.30pm
Wednesday 29 <sup>th</sup> November	Year 5 and 6 visit to Sunderland University
Thursday 30 <sup>th</sup> November	Christmas Fayre Evening 5pm – 6.30pm
Tuesday 5 <sup>th</sup> December	Year 3 /4 Movie Night 3.15pm – 5pm
Wednesday 6 <sup>th</sup> December	Year 5 and 6 visit - Ice Skating/Pizza
Thursday 7 <sup>th</sup> December	Christmas Jumper Day
Thursday 7 <sup>th</sup> December	Nursery/ Year 1 and 2 visit to The Rising Sun
Friday 8 <sup>th</sup> December	Year 3 and 4 visit to Beamish
Monday 11 <sup>th</sup> December	Years 5 and 6 Performance 9.30am
Monday 11 <sup>th</sup> December	Choir Carol service 3.30pm
Tuesday 12 <sup>th</sup> December	Nursery/Reception Performances 9.30am
Tuesday 12 <sup>th</sup> December	Year 1 and 2 visit to Pantomime
Wednesday 13 <sup>th</sup> December	Years 1 and 2 Performances 9.30am
Wednesday 13 <sup>th</sup> December	Year 3 and 4 visit to Pantomime
Thursday 14 <sup>th</sup> December	Years 3 and 4 Performances 9.30am
Thursday 14 <sup>th</sup> December	Year 5 and 6 visit to Pantomime
Monday 18 <sup>th</sup> December	Year 1 and 2 Christmas Party (pm)
Tuesday 19 <sup>th</sup> December	Nursery/Reception Christmas Party (am) Years 3 and 4 Christmas Party (pm)
Wednesday 20 <sup>th</sup> December	Christmas Dinner Day
Thursday 21 <sup>st</sup> December	Year 5 and 6 Film afternoon (pm)
Friday 22 <sup>nd</sup> December	School finishes for Christmas break at 1.30pm

## TERM DATES 2023/2024

NORTHUMBERLAND SCHOOL HOLIDAY AND TERM DATES 2023/2024

HOLIDAY OR OCCASION OF CLOSURE	DATE ON WHICH SCHOOL WILL CLOSE	DATE ON WHICH SCHOOL WILL REASSEMBLE
TEACHER TRAINING DAY	MONDAY 4 SEPTEMBER 2023	
Summer 2022	Friday 21 July 2023	Tuesday 5 September 2023
TEACHER TRAINING DAY	FRIDAY 3 NOVEMBER 2023 *	
October Mid Term 2023	Friday 27 October 2023	Monday 6 November 2023
TEACHER TRAINING DAY	Monday 8 JANUARY 2024	
Christmas/New Year 23/24	Friday 22 December 2023	Tuesday 9 January 2024
TEACHER TRAINING DAY	FRIDAY 23 FEBRUARY 2024 *	
Spring Mid Term 2024	Friday 16 February 2024	Monday 26 February 2024
Easter 2024	Thursday 28 March 2024	Monday 15 April 2024
MAY DAY	MONDAY 6 MAY 2024	
TEACHER TRAINING DAY	FRIDAY 24 MAY 2024	
Summer Mid Term 2024	Thursday 23 May 2024	Monday 3 June 2024
Summer 2024	Friday 19 July 2024	Tuesday 3 September 2024