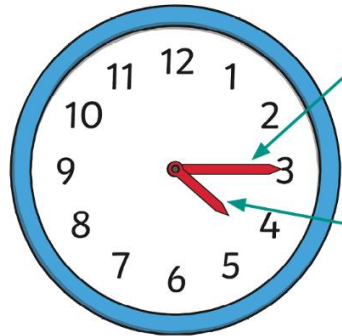


Key Vocabulary
12-hour time
24-hour time
Roman numerals
analogue
digital
hours
minutes
seconds
o'clock
half past
quarter past
quarter to
midday
midnight
noon
a.m.
p.m.

Analogue and Digital Clocks

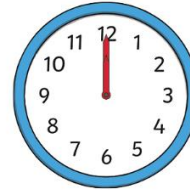


Minute Hand

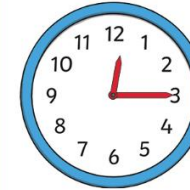
The long hand points to the minutes past the hour.

Hour Hand

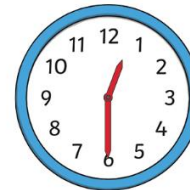
The short hand points to the hour. If this hand is pointing between the hours, it is the earlier hour of the two.



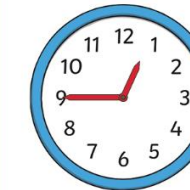
twelve o'clock



quarter past twelve

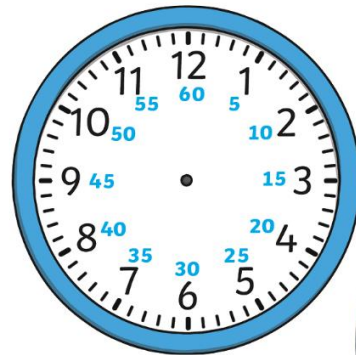


half past twelve



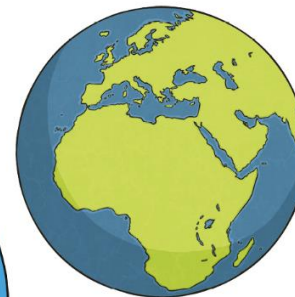
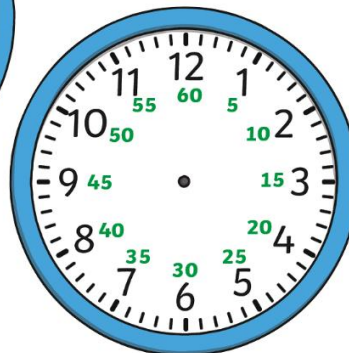
quarter to one

Durations of Time



There are **60 seconds** in an minute.

There are **60 minutes** in an hour.



There are **24 hours** in a day

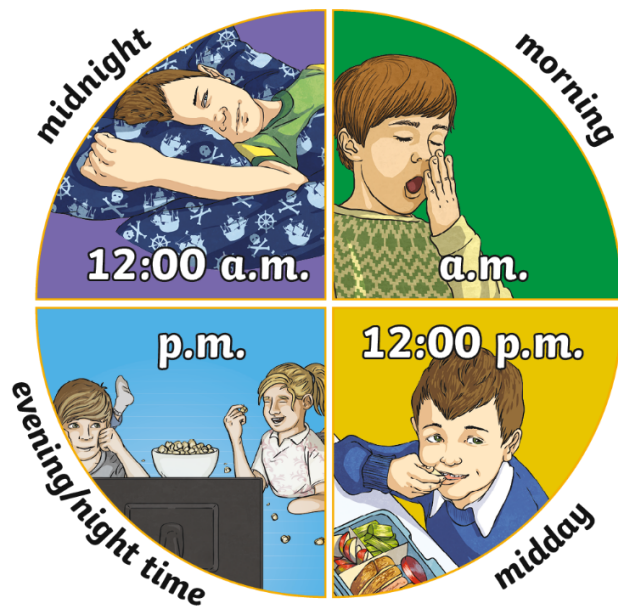
There are **7 days** in a week.



There are **12 months** in a year.

24-Hour Time

There are 24 hours in a day.



	01:00	1 a.m.	1 o'clock	
	02:00	2 a.m.	2 o'clock	
	03:00	3 a.m.	3 o'clock	
	04:00	4 a.m.	4 o'clock	
	05:00	5 a.m.	5 o'clock	
	06:00	6 a.m.	6 o'clock	
	07:00	7 a.m.	7 o'clock	
	08:00	8 a.m.	8 o'clock	
	09:00	9 a.m.	9 o'clock	
	10:00	10 a.m.	10 o'clock	
	11:00	11 a.m.	11 o'clock	
	12:00	12 p.m.	12 o'clock	

	13:00	1 p.m.	1 o'clock	
	14:00	2 p.m.	2 o'clock	
	15:00	3 p.m.	3 o'clock	
	16:00	4 p.m.	4 o'clock	
	17:00	5 p.m.	5 o'clock	
	18:00	6 p.m.	6 o'clock	
	19:00	7 p.m.	7 o'clock	
	20:00	8 p.m.	8 o'clock	
	21:00	9 p.m.	9 o'clock	
	22:00	10 p.m.	10 o'clock	
	23:00	11 p.m.	11 o'clock	
	00:00	12 a.m.	12 o'clock	